

Australasian Pedestrian Facility Selection Tool [V2.3.0]

Facility feasibility assessment

The feasibility of different pedestrian crossing facilities for a site is assessed through a decision tree for each facility type.

- The variable **speed** refers to the highest value of posted speed or 85th percentile approach speed
- *Median refuges* are feasible in all situations where there is more than one trafficked lane, however if there is an existing median it is assumed to be retained regardless of whether it acts as a refuge in its current form
- Derived facilities (such as *Zebra with platform*) are only feasible if all parent facilities are feasible (in this example both *Zebra* **and** *Platform*)
- Median refuges and platforms are not available at the same facility but may be viable with or without kerb extensions
- For the jurisdictions of South Australia and Tasmania *Zebra crossings* are only feasible if on a platform – this means that *Zebra only*, *Zebra with kerb extensions*, *Zebra with median refuge* and *Zebra with kerb extensions and median refuge* are always determined to be unsuitable in these jurisdictions.

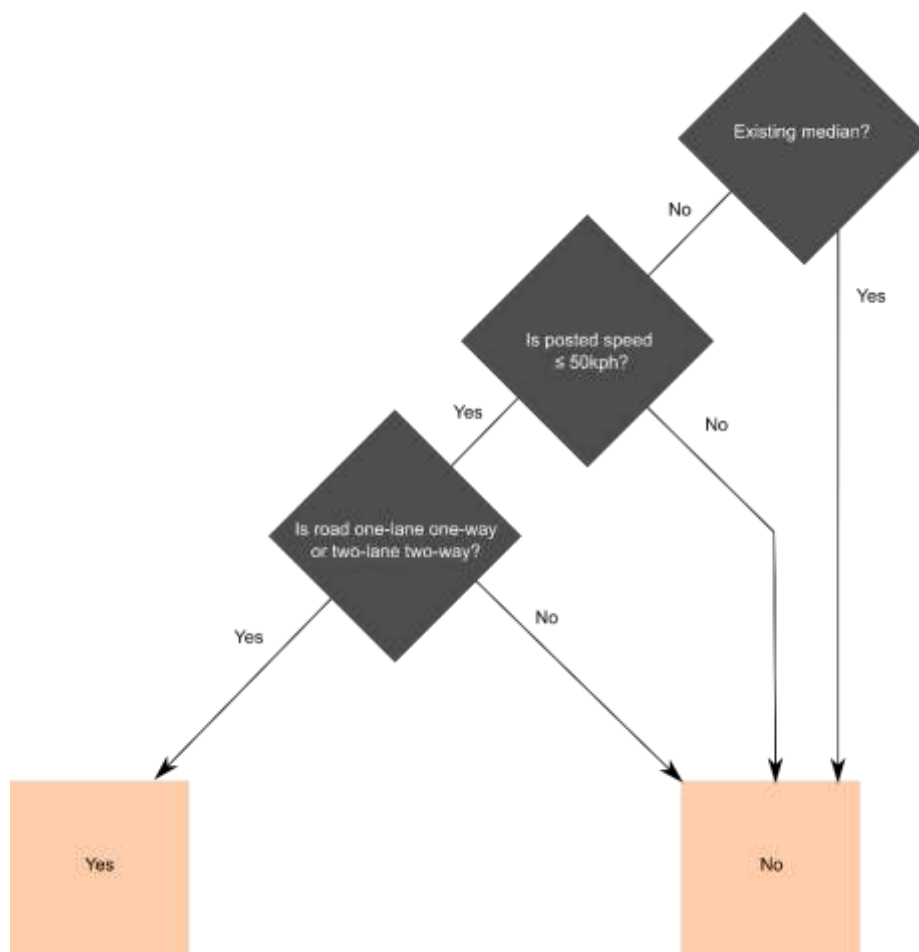


Figure 1. Platform feasibility decision tree

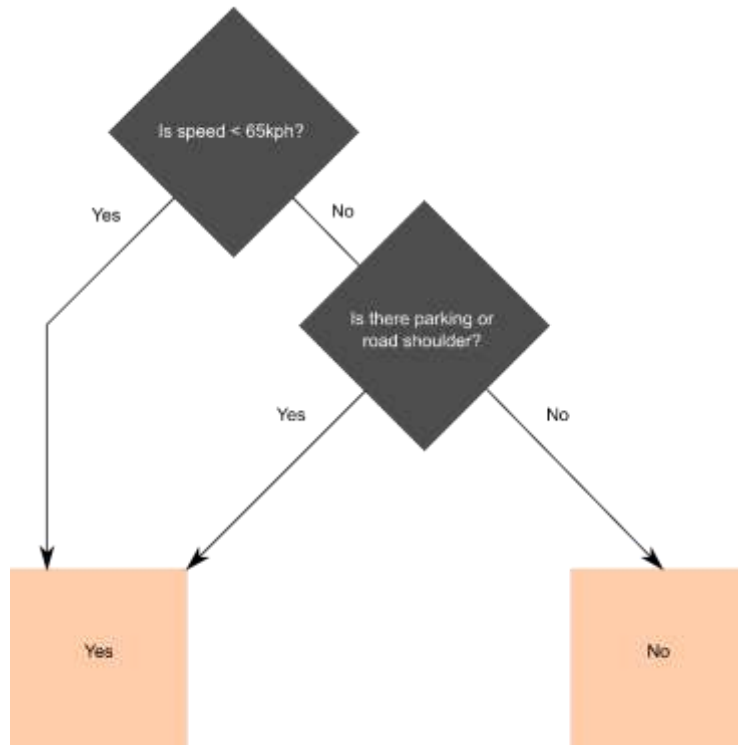


Figure 2. Kerb extension feasibility decision tree

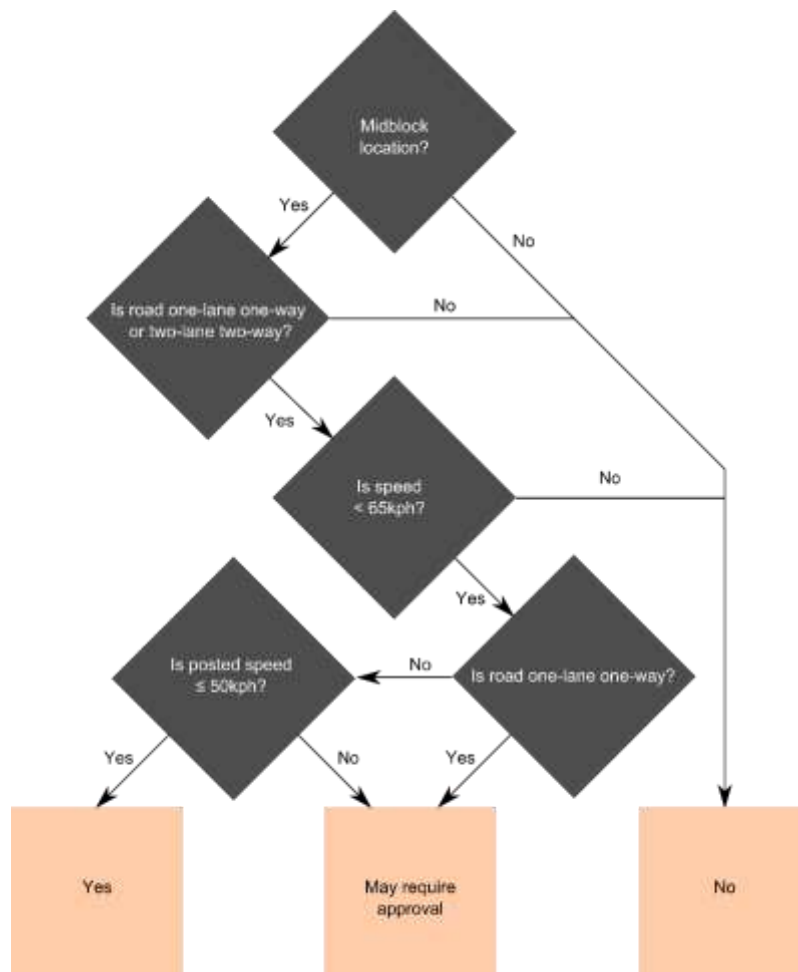


Figure 3. Zebra crossing feasibility decision tree

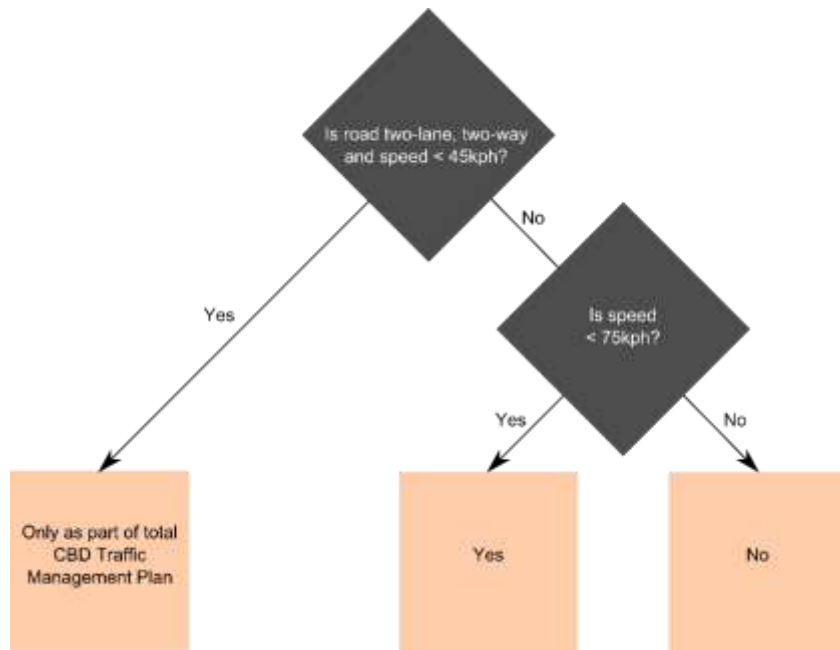


Figure 4. Signals feasibility decision tree

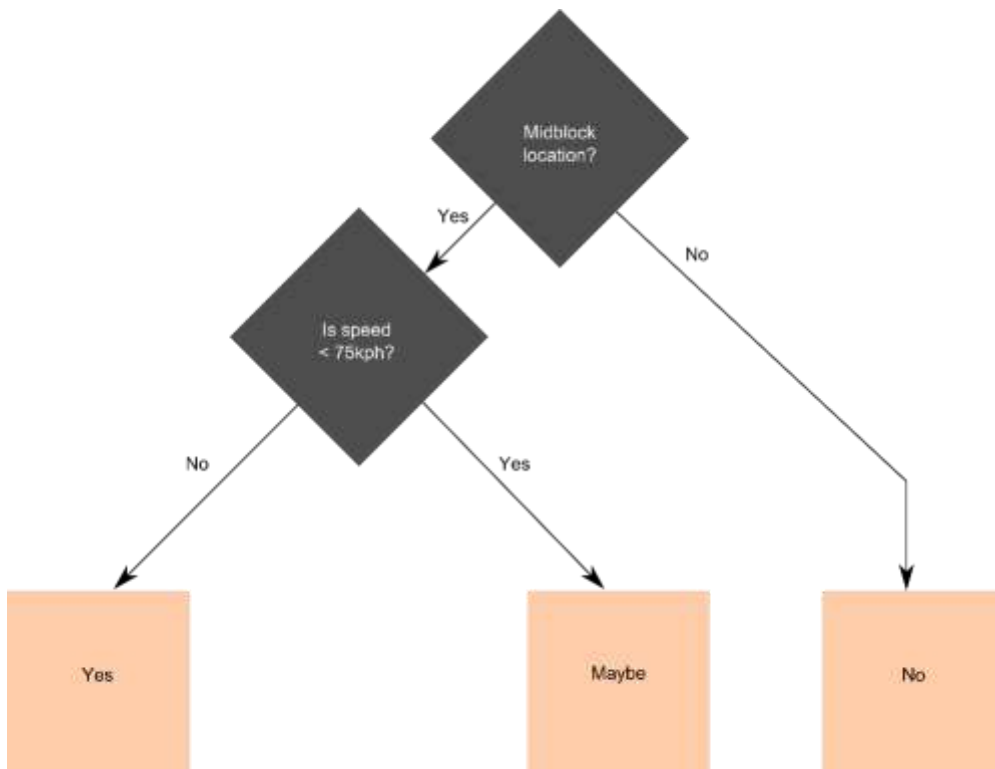


Figure 5. Grade separation feasibility decision tree